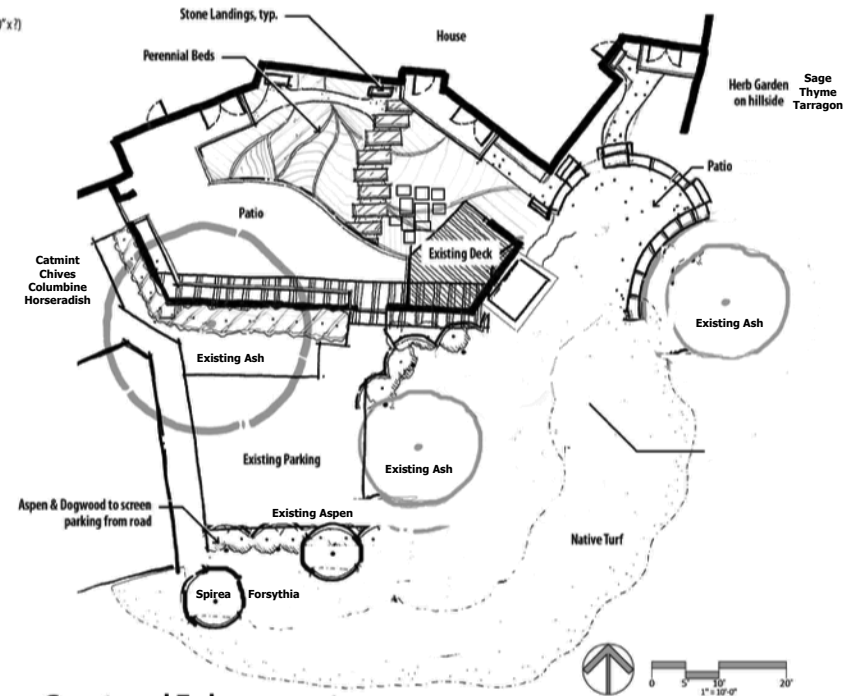
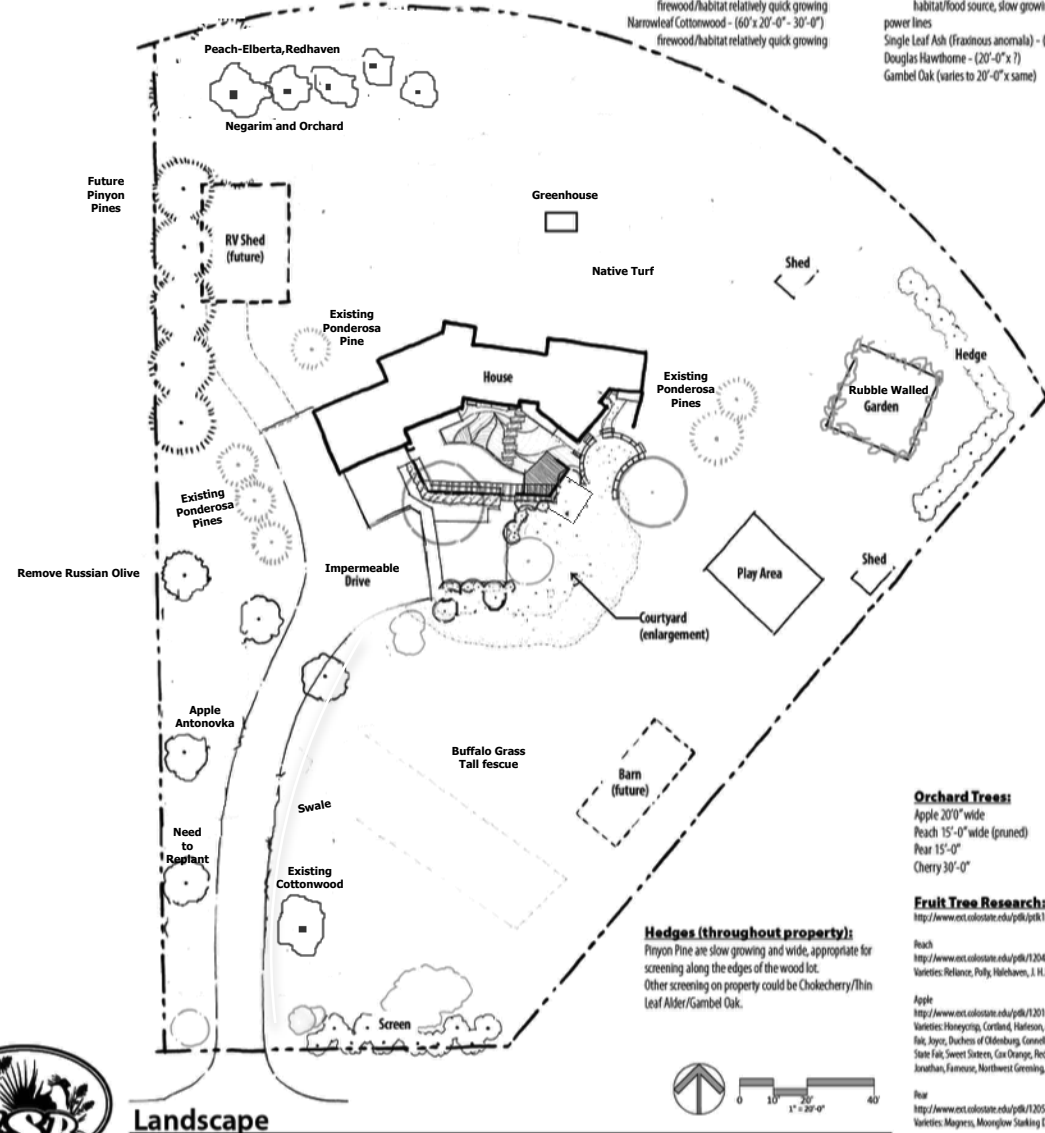


### Large Woodlot Trees:

Douglas Fir - (70'-0" x 20'-0")  
 firewood/habitat relatively quick growing  
 Narrowleaf Cottonwood - (60' x 20'-0" - 30'-0")  
 firewood/habitat relatively quick growing

### Small Woodlot Trees:

Pinyon Pine - (20'-0" - 30'-0" x same)  
 habitat/food source, slow growing, edges under power lines  
 Single Leaf Ash (*Fraxinus anomala*) - (20'-0" x 7')  
 Douglas Hawthorne - (20'-0" x 7')  
 Gambel Oak (varies to 20'-0" x same)



**Courtyard Enlargement**

### Orchard Trees:

Apple 20" wide  
 Peach 15'-0" wide (pruned)  
 Pear 15'-0"  
 Cherry 30'-0"

### Fruit Tree Research:

<http://www.ext.colostate.edu/yfbl/yfbl1203.html>

Peach  
<http://www.ext.colostate.edu/yfbl/yfbl1204.html>  
 Varieties: Reliance, Polly, Halebaven, J. H. Hale, Ranque, Elberta and Haven.

Apple  
<http://www.ext.colostate.edu/yfbl/yfbl1201.html>

Varieties: Honeycrist, Cardinal, Haleson, Redstone Canyon Gold, Zestar, State Fair, Joyce, Duchess of Oldenburg, Connell Red, Keopake, Prairie Spy, Regent, State Fair, Sweet Sixteen, Cox Orange, Red Delicious, Golden Delicious, McIntosh, Jonathan, Fameuse, Northwest Greening, Joyce, Wealthy, Lodi

Pear  
<http://www.ext.colostate.edu/yfbl/yfbl1205.html>  
 Varieties: Magness, Mounslow Stinking Delicious (Maxine)

**Hedges (throughout property):**  
 Pinyon Pine are slow growing and wide, appropriate for screening along the edges of the wood lot.  
 Other screening on property could be Chokecherry/Thin Leaf Alder/Gambel Oak.

### Native Turf:

- *Bouteloua gracilis* (Blue Grama)
- *Festuca idahoensis* (Idaho Fescue)
- *Koeleria macrantha* (Prairie Junegrass)
- *Bouteloua dactyloides* (Buffalograss)

### Native Trees/Shrubs:

- *Alnus incana tenuifolia* (Thinleaf Mountain Alder)
- *Celtis reticulata* (Netleaf Hackberry)
- *Crataegus douglasii* (Douglas Hawthorn)
- *Populus angustifolia* (Narrowleaf Cottonwood)
- *Populus tremuloides* (Aspen)
- *Cornus sericea* (Redtwig Dogwood, Red Osier Dogwood)
- *Philadelphus lewisii* (Mockorange)
- *Prunus virginiana* (Chokecherry)
- *Ribes aureum* (Golden Currant)

### Native Perennials:

- *Achillea millefolium* (Tarrow)
- *Aquilegia coerulea/caerulea* (Colorado Blue Columbine)
- *Aquilegia formosa* (Western Red Columbine)
- *Clematis ligusticifolia* (Western White Clematis)
- *Eriogonum umbellatum* (Sulfurflower Buckwheat)
- *Geranium viscosissimum* (Sticky Geranium)
- *Hymenoxys hoopesii* (Dw's Claws)
- *Ilama rivalaris* (Mountain Hollyhock)
- *Its missouriensis* (Rocky Mountain Iris)
- *Linum lewisii* (Blue Flax)
- *Penstemon strictus* (Rocky Mountain Penstemon)
- *Sphaeralcea mucronata* (Munn's Globemallow)
- *Festuca idahoensis* (Idaho Fescue)

**Landscape**



Conservation Seeding & Restoration, Inc.  
 106 Center Street West | Kimberly, ID 83341  
 ph. 208.423.4835  
 www.csr-inc.com  
 Copyright 2012 Conservation Seeding & Restoration, Inc.

**Dibble Residence**

David & Ellen Dibble

13673 West 78th Street | Arvada, CO 80005