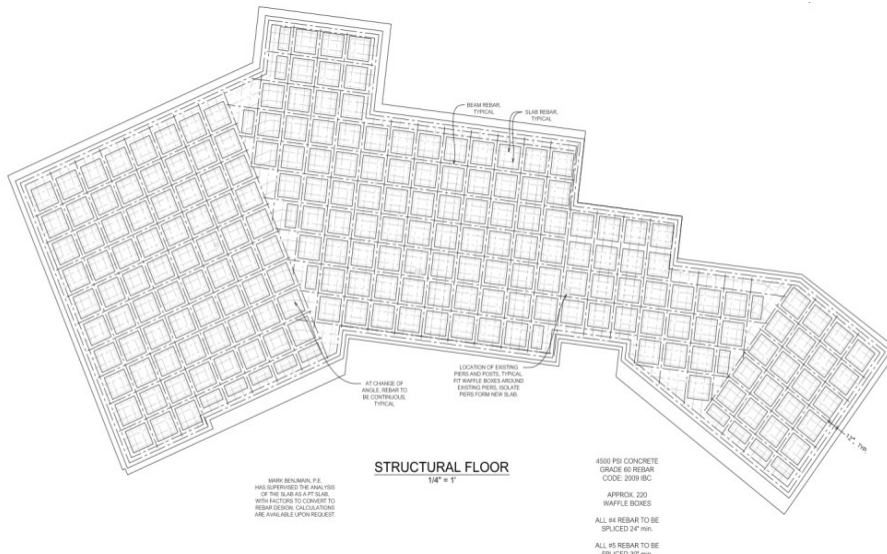


# Slab Floor System



The Waffle Mat slab system solves the problem the house had with clay subsoil that badly heaved the old slab.



Recycled plastic boxes that are 19" x 19" X 8" tall are spaced 12" apart on a 10 mil vapor barrier over the plumbing and a rock layer and allow for soil expansion. After the old slab was removed an

extra foot of dirt was excavated by hand for the new slab system. When insulated with spray foam, reinforced with 5/8 and 1/2 inch rebar, and with the radiant pipe installed, the concrete was poured.

