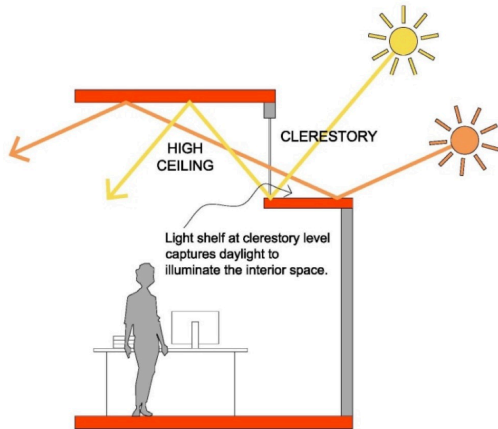


# Light Shelves and LED Lights



Light Shelves are often used in industrial buildings to save artificial lighting energy. Properly constructed shelves with a reflective surface and white ceilings not only reduce glare but also can save 70% in lighting costs, especially in clear sunny climates like Colorado.

The ERV ventilation supply shaft acts as a light shelf under the clerestory windows blocking and reflecting incoming sunlight. When the sun is low in winter the clerestory sun shines on the rear thermal mass wall not the furniture. The white ceiling has a smooth finish to reflect the incoming light.

All the lights in the house have been converted to LED fixtures or bulbs to help save power and provide the best LED color rendering performance.



*Light shelf under clerestory windows*