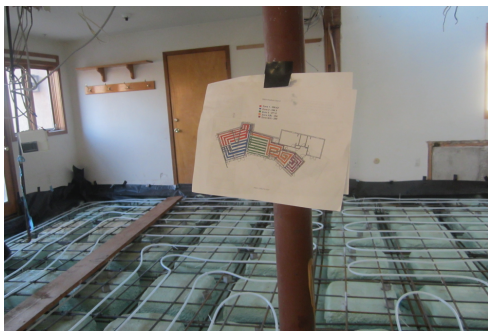


# Radiant Hot Water Heat



*Radiant pipe design laid under concrete*

The radiant piping was designed to maintain 85° water throughout the house. It was based on the Manual J analysis. A temporary license to professional software was used for the calculations. The Uponor Radiant Design Manual both in print and the online version were references. Oxygen barrier ½” pex was laid approximately 12” apart and 6” at the outside walls. The radiators remain in the rear two bedrooms and bath. The length of the radiators was checked for low temperature heat and they are adequately sized.